

LMS

www.LMS-PMA.com

Luzerne County

Community Retail Center

Commercial Real Estate

WEST HAZLETON PLAZA

Total GLA: ± 32,800 SF

STAPLES

Anchored by:

W. Hazleton, PA 18202

West Hazleton Borough

180 Susquehanna Blvd.



SPACE AVAILABLE:

- ± 1,020 ~ 2,640 SF

2011 DEMOGRAPHICS:

	<u>3 Mile</u>	<u>5 Mile</u>	<u>10 Mile</u>
Population	21,689	47,724	79,574
Avg. HH Income	\$54,739	\$54,303	\$55,072
Daytime Population	12,560	25,024	30,710

West Hazleton Plaza

was built in 1998.

The center has excellent visibility on Route 93 and is adjacent to the Valmont Plaza.

In 2004, the center expanded to add ± 9,000 square feet to accommodate Wine & Spirits, and Cosmo Prof Beauty Supply.

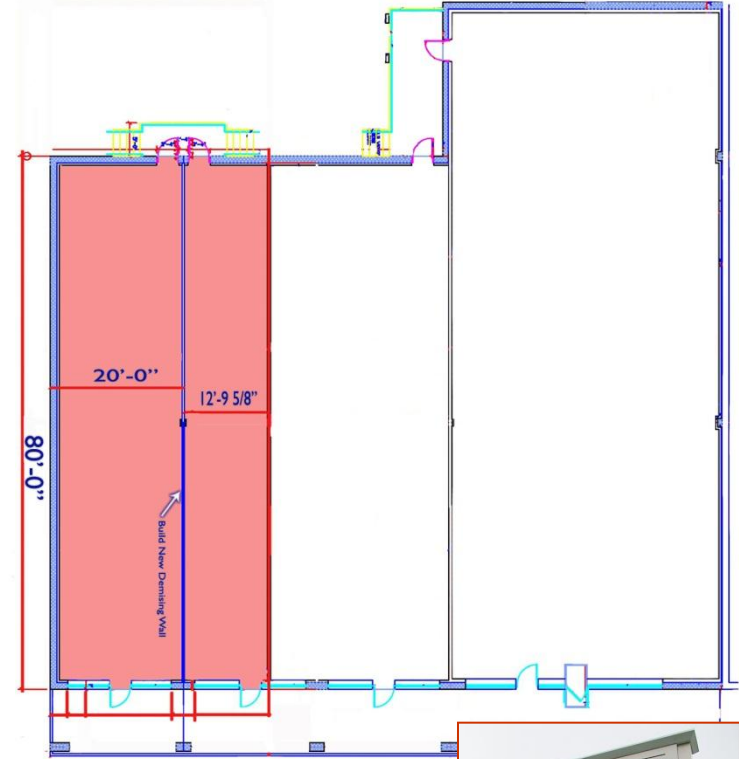
Currently we have 1,020 – 2,640 square foot end cap space available

*See reverse side for **site plan**



FOR LEASE "WEST HAZLETON PLAZA"

Retail Space
± 1,020 ~ 2,640 SF Available



LMS

Commercial Real Estate

www.LMS-PMA.com

For additional information, please contact:

Blake Gross
717.569.9373

bgross@lms-pma.com

The information herein (including all faxes pertaining to the same) has been obtained from sources deemed reliable. While we do not doubt its accuracy, we have not verified and make no guarantee, warranty, or representation about it. It is your responsibility to independently confirm its accuracy and completeness and is subject to correction or can be withdrawn without notice.