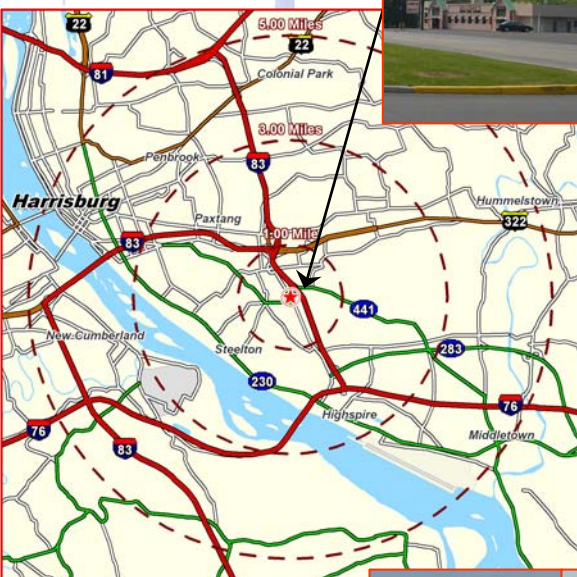


HARRISBURG, PA 17111
 SWATARA TOWNSHIP
 DAUPHIN COUNTY

EISENHOWER PROPERTIES
RETAIL CENTER
Total GLA – 118,876 SF

EISENHOWER BLVD
 & RT. 441



SPACE AVAILABLE:

- * 1,973 SF
- * 4,770 - 9,990 SF
- * 3,456 - 38,722 SF
- * 1,050 SF *1,050 – 2,100 SF * 6,200 SF

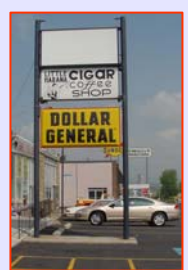
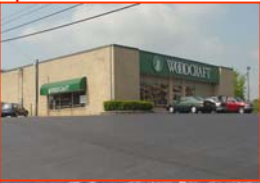
Managed by: **PMA** Property Management Alternatives, Inc.

2008 DEMOGRAPHICS:

	<u>1 Mile</u>	<u>3 Mile</u>	<u>5 Mile</u>
Population	4,059	51,818	141,430
Avg. HH Income	\$51,914	\$55,691	\$58,360

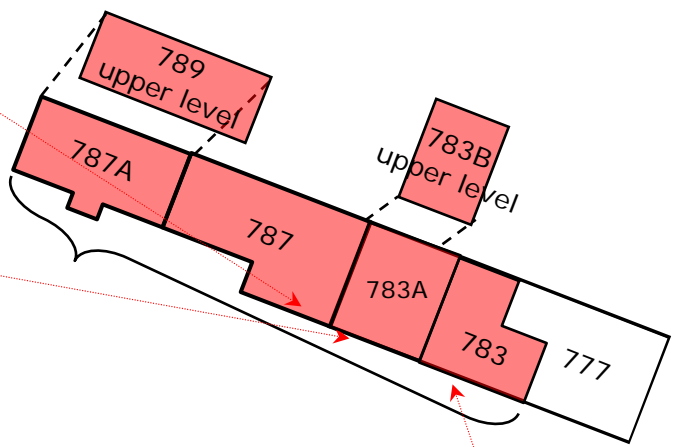
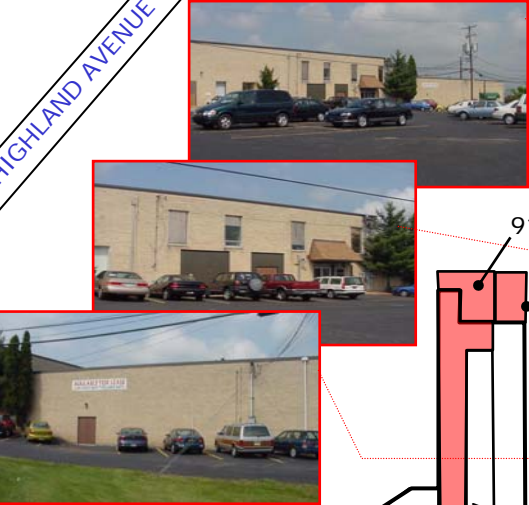
Traffic Count Eisenhower Blvd.: 19,035 vehicles per day
Traffic Count Rt. 441 Lindle Rd.: 38,279 vehicles per day

The **Eisenhower Blvd. Properties** are a mix of retail, office and warehouse properties. This site is in a high traffic area with easy, signalized access. It is accessible to major traffic arteries on the East Shore of Harrisburg.



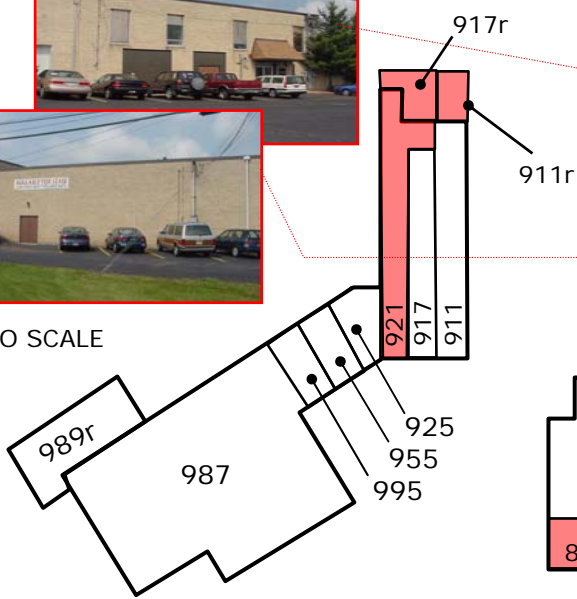
*See reverse side for **site plan**

HIGHLAND AVENUE

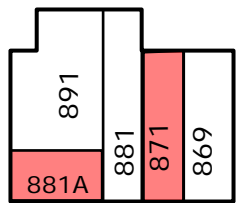


SUBJECT TO CHANGE		
851	Harbor Freight	12,342 sf
869	Flynn & O'Hara Uniforms	3,660 sf
871	Available	3,660 sf
881	Dollar General	7,250 sf
881A	Happy Chef Uniform	1,973 sf
891	Liquid 891	4,930 sf
911	Quick Check	2,910 sf
911r	Available	3,090 sf
917	Electrolux	2,070 sf
917r	Available	4,770 sf
921	Available	5,220 sf
925	Morris Laundromat	1,800 sf
955	Pesce Med. Rest.	4,558 sf
995	New China Rest.	3,200 sf
987	Gilligan's Rest.	11,204 sf
989r	Murry's Steaks	1,500 sf
789	Available	7,313 sf
787	Available	11,840 sf
787A	Available	7,313 sf
783B	Available	4,400 sf
783A	Available	4,400 sf
783	Available	3,456 sf
777	Woodcraft	6,224 sf

NOT TO SCALE



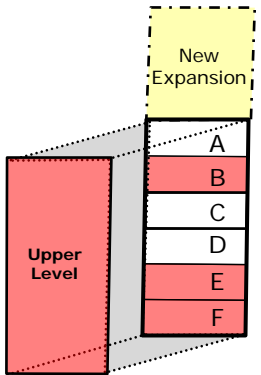
Up To (+/-) **34,288 SF**
Contiguous!



EISENHOWER BOULEVARD

900 Eisenhower Blvd

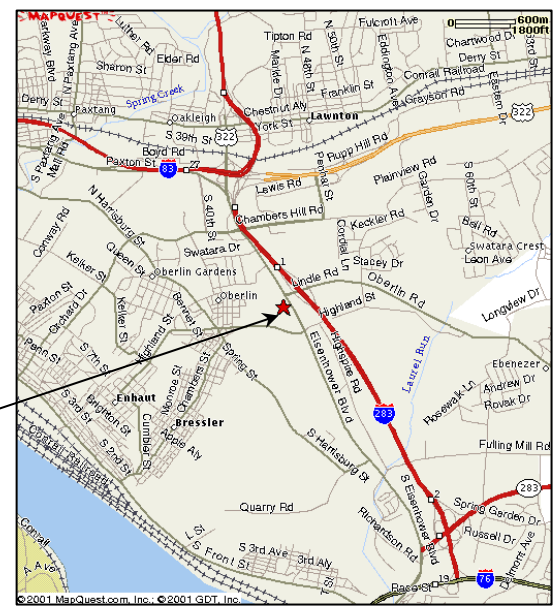
A	Dominos Pizza	1,036 SF
B	Available	1,050 SF
C	T & B Daycare	1,036 SF
D	State Farm Insurance	1,036 SF
E	Available	1,050 SF
F	Available	1,050 SF
Upper level:		
Available		6,200 SF



LINDLE ROAD (US 441)

Leasing Plan
for
Eisenhower Blvd. Properties

Harrisburg, PA 17111
Swatara Township



For additional information please contact:

LMS Commercial Real Estate
LEASING • MANAGEMENT • SALES