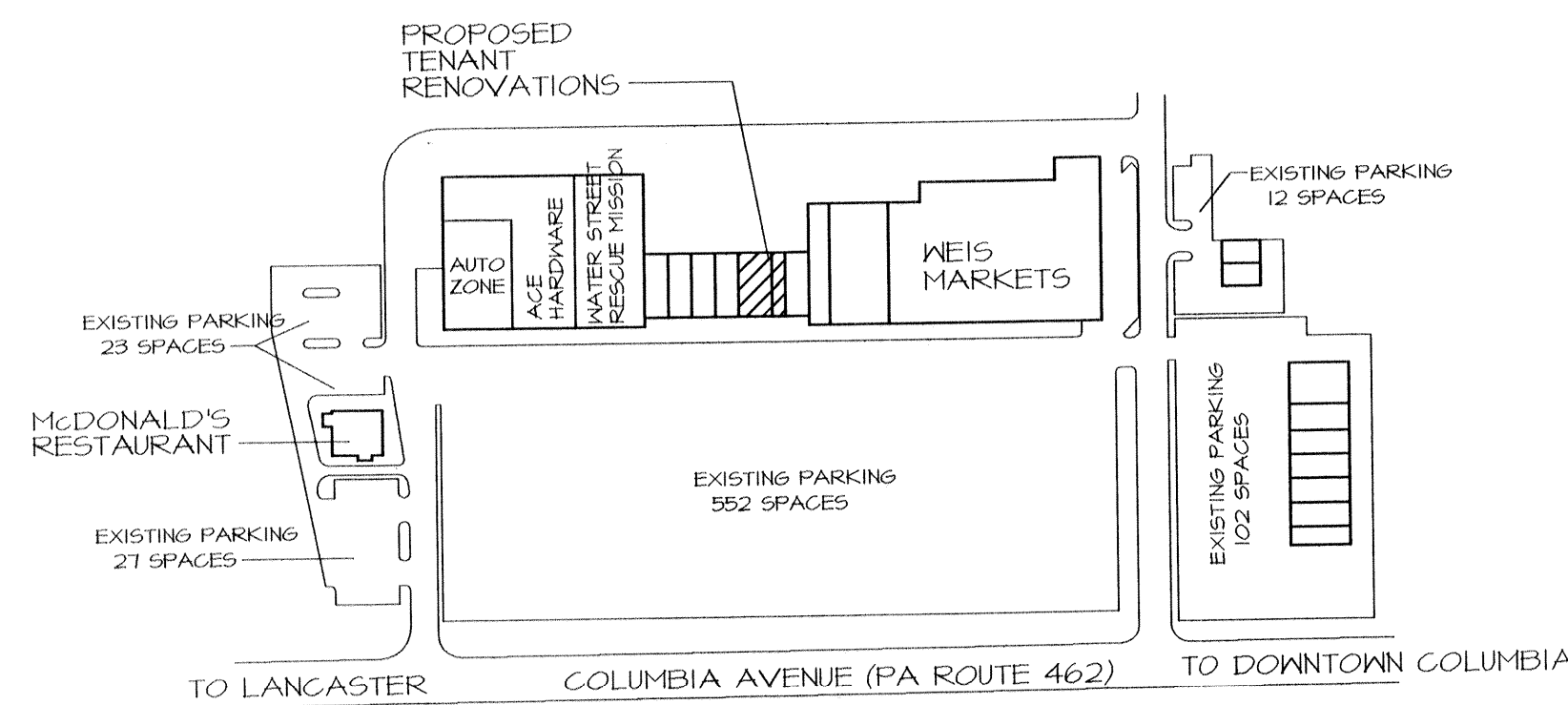
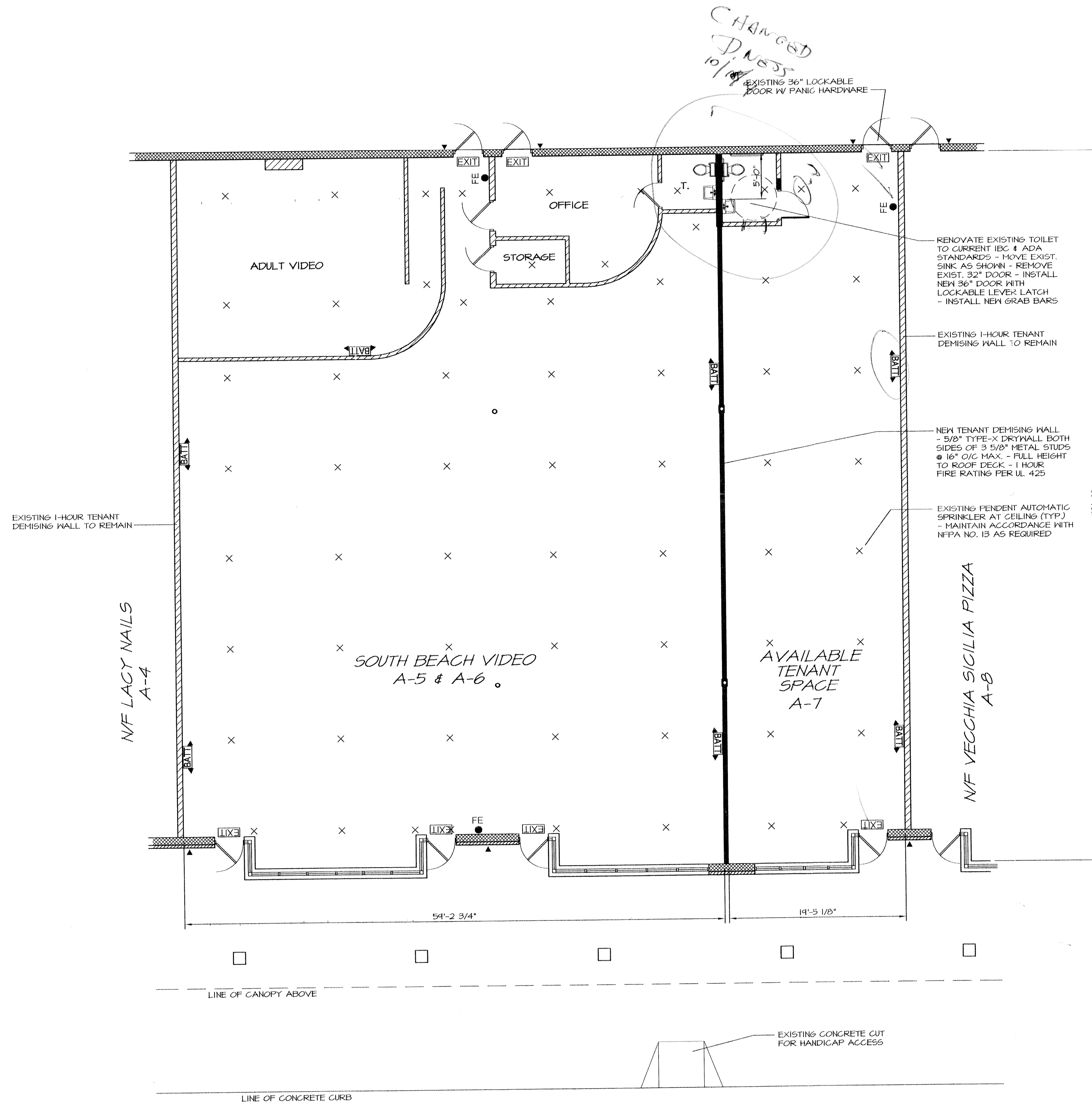


LOCATION PLAN
NO SCALE



COLUMBIA SHOPPING CENTER
WEST HEMPFIELD TOWNSHIP, LANCASTER COUNTY, PA

SITE PLAN
1" = 200'



FLOOR PLAN
1/8" = 1'-0"

NEW RENOVATION OF EXISTING RETAIL SPACE TO DIVIDE SPACE INTO NEW AVAILABLE SPACE (A-7) AND SMALLER EXISTING SOUTH BEACH VIDEO STORE (A-6 & A-5) - RENOVATE EXISTING TOILET IN A-7 TO ADA STANDARDS

EXISTING BUILDING IS MASONRY AND STRUCTURAL STEEL AND STEEL ROOF DECK WITH 1-HOUR DEMISING WALLS FULL HEIGHT TO ROOF DECK

IBC 2003
M OCCUPANCY
CONSTRUCTION TYPE IIB
NON-PROTECTED
THIS BUILDING IS FULLY SPRINKLERED

SPACE A-5 & A-6 (SOUTH BEACH VIDEO)
4,535 SQ FT GROSS AREA
4,535 SQ FT @ 60 SQ FT PER OCCUPANT =
76 TOTAL OCCUPANCY
76 OCCUPANTS X .20" = 15.2" OF EGRESS REQUIRED
5 DOORS X 32" CLEAR = 160" OF EGRESS PROVIDED
2 2-A FIRE EXTINGUISHERS REQUIRED

SPACE A-7 (AVAILABLE)
1,443 SQ FT GROSS AREA
1,443 SQ FT @ 60 SQ FT PER OCCUPANT =
25 TOTAL OCCUPANCY
25 OCCUPANTS X .20" = 5" OF EGRESS REQUIRED
2 DOORS X 32" CLEAR = 64" OF EGRESS PROVIDED
1 2-A FIRE EXTINGUISHER REQUIRED

OWNER CONTACT
JOE DEERIN
LMS COMMERCIAL REAL ESTATE
120 NORTH POINT BLVD
SUITE 301
LANCASTER, PA 17601
(717) 564-4373

CONTRACTOR CONTACT
JOHN WOODWARD
REAL SERVICES, INC.
1005 EAST KING STREET
YORK, PA 17403
(717) 854-8122

APPROVED CONSTRUCTION DOCUMENTS
Pa. UCC & 2003 IRC / 2003 IRC Review
Addendum: (Yes/No)
Reviewer: *[Signature]*
Date Approved: 9/8/04

NO.	REVISIONS

THIS DRAWING AND INFORMATION CONTAINED HEREIN IS THE PROPERTY OF REAL SERVICES, INC. AND HAS BEEN PREPARED FOR ITS USE AND/OR THE OWNER OF THIS PROJECT. REUSE OR REPRODUCTION OF ALL OR PART OF THIS DRAWING WITHOUT THE EXPRESS WRITTEN PERMISSION OF REAL SERVICES, INC. IS AN INFRINGEMENT OF THE COPYRIGHT LAWS OF THE UNITED STATES OF AMERICA AND IS PUNISHABLE BY LAW.
THIS DRAWING © 2004 BY REAL SERVICES, INC.

REAL SERVICES, INC.
CONTRACTORS - PROJECT MANAGERS
1005 E. KING ST. YORK, PA 17403 (717) 854-8122 FAX (717) 845-7562

FILE REAL678-1DW6 DATE AUG. 17, 2004 SCALE 1/8" = 1'-0" DWN BY JON FREY

TENANT SPACE RENOVATIONS
SOUTH BEACH VIDEO & AVAILABLE SPACE A-7
COLUMBIA SHOPPING CENTER
WEST HEMPFIELD TOWNSHIP, LANCASTER COUNTY
1768 COLUMBIA AVENUE, COLUMBIA, PA 17512

SHEET
A-1