

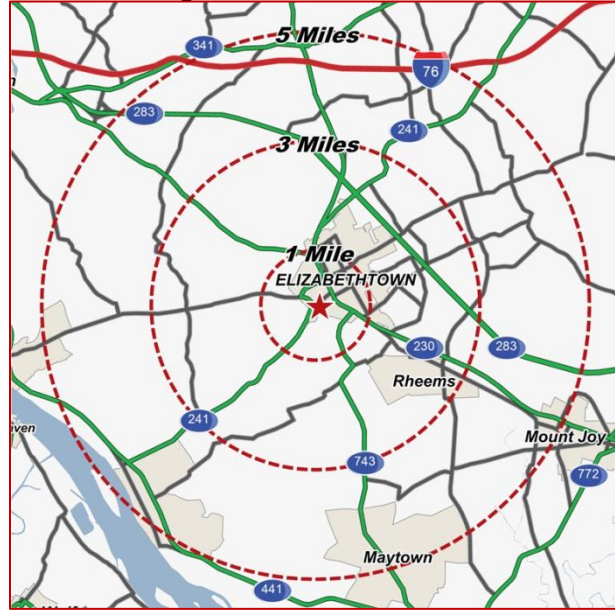
SYCAMORE SQUARE

Total GLA: ± 65,234 SF

Elizabethtown, PA 17022

Elizabethtown Borough

West Bainbridge Road & Masonic Drive



2011 DEMOGRAPHICS:

	1 Mile	3 Mile	5 Mile
Population:	6,742	25,113	41,424
Avg. HH Income:	\$48,479	\$64,940	\$68,830
Daytime Population:	4,869	8,791	12,240

Traffic Count on Masonic Drive:

12,200 vehicles per day

Sycamore Square

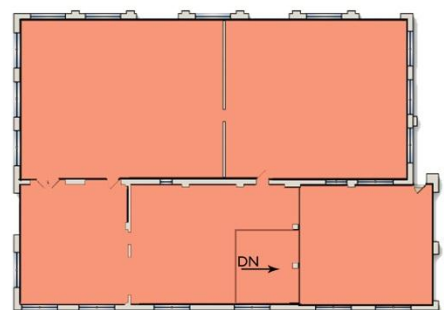
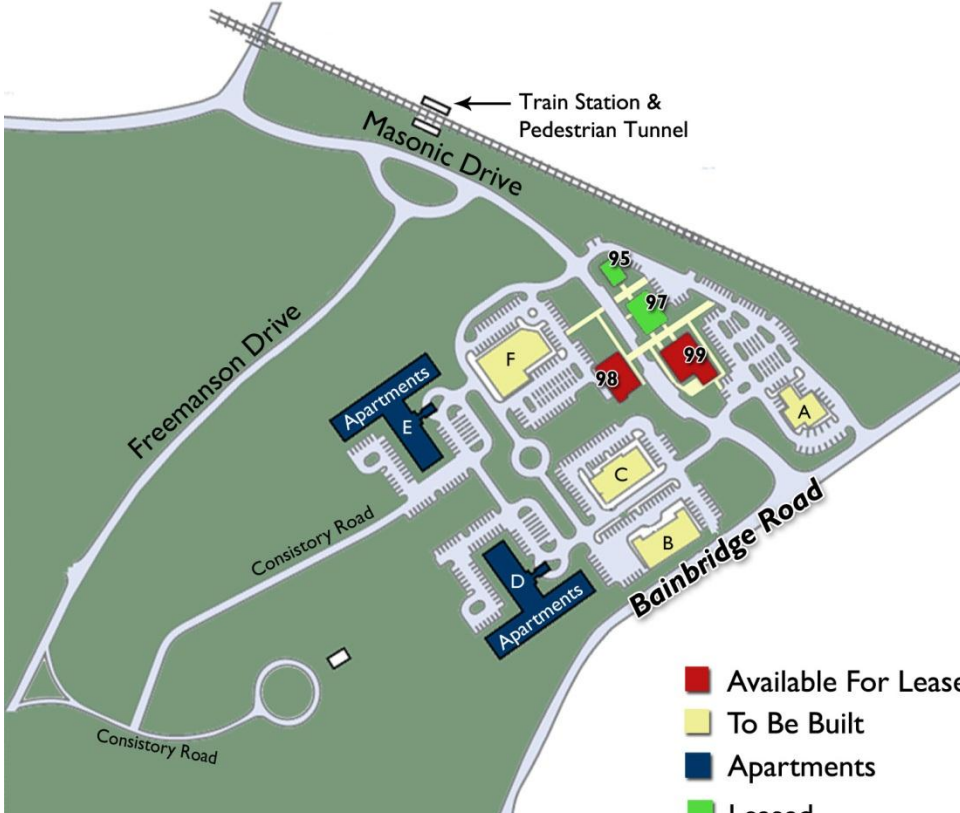
was created with a vision to enhance an already appealing community with convenient services for residents, while boosting the Elizabethtown economy, and revitalizing the Amtrak station.

In addition to this, there are two (2) apartment buildings, that have added 126 residences to this 23-acre mixed-use development project including restaurants, retail and office space.

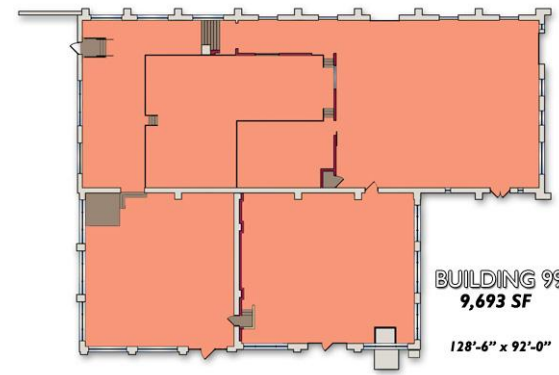


*See reverse side for **site plan**





BUILDING 98
 106'-10" x 74'-6"
 7,158 SF Available



BUILDING 99
 9,693 SF
 128'-6" x 92'-0"

Subject To Change:

Bldg. 98	Available	+/- 7,158 SF
Bldg. 99	Available	+/- 9,693 SF
Bldg. 97	Toshiba	+/- 5,204 SF
Bldg. 95	DDMP	+/- 2,288 SF

Investment Advisors



For additional information, please contact:
 Chad Ward
 717.569.9373 ext. 958
cward@lms-pma.com

The information herein (including all faxes pertaining to the same) has been obtained from sources deemed reliable. While we do not doubt its accuracy, we have not verified and make no guarantee, warranty, or representation about it. It is your responsibility to independently confirm its accuracy and completeness and is subject to correction or can be withdrawn without notice.

