

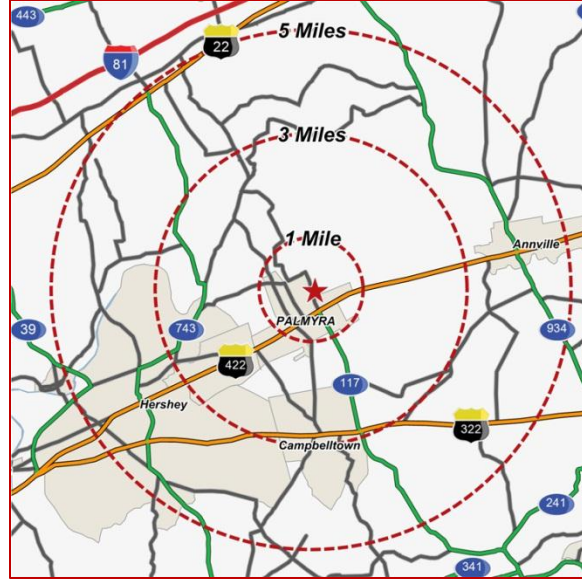
## PRE-APPROVED 48 APARTMENTS

Total Acres: ± 7 Acres

Palmyra, PA 17078

Palmyra Township

East Spruce St. & North Forge Rd.



### 2011 DEMOGRAPHICS:

	<u>1 Mile</u>	<u>3 Mile</u>	<u>5 Mile</u>
Population:	6,183	22,316	44,313
Avg. HH Income:	\$62,654	\$70,992	\$72,312
Daytime Population:	1,873	17,732	35,669

### 7 Acres ~ FOR SALE

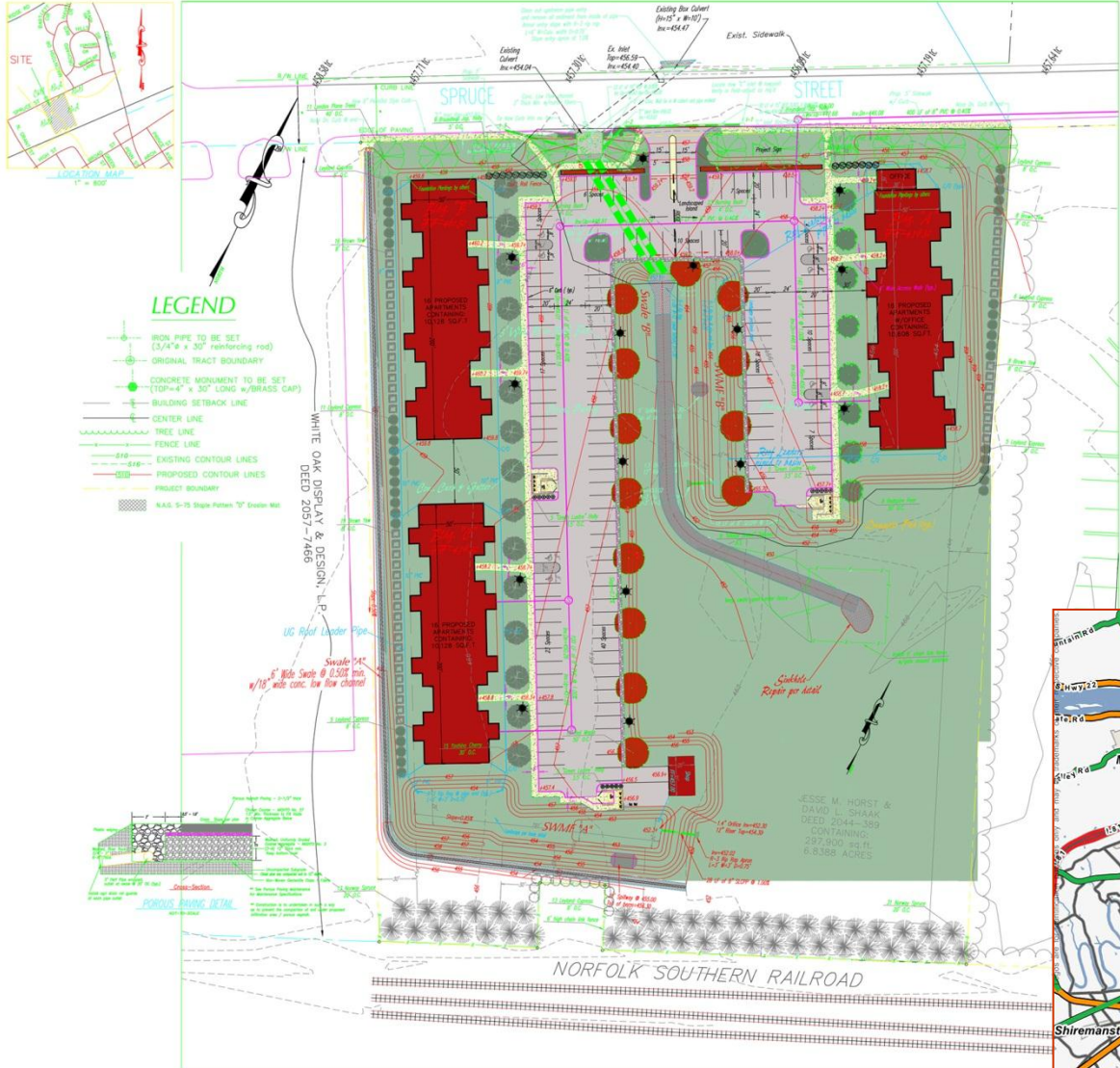
This property is located along 303 East Spruce Street, located across from Northside Elementary School.

The land has been pre-approved To build 48 apartments.

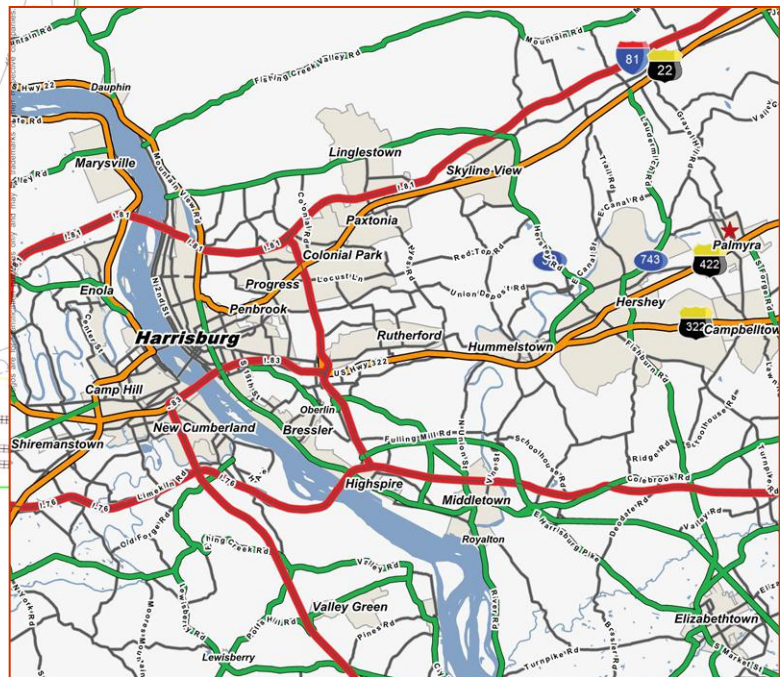
**Zoned:  
R (Residential)**

\*See reverse side for **Site Plan**





**Pre-Approved 48 Apartment Units**  
**3 Buildings ± 7 acres**  
**For Sale: \$1,650,000**



**LMS**  
 Commercial Real Estate  
 www.LMS-PMA.com

For additional information, please contact:  
 Ted Hummel, CCIM  
 717.222.9625  
[thummel@lms-pma.com](mailto:thummel@lms-pma.com)

The information herein (including all taxes pertaining to the same) has been obtained from sources deemed reliable. While we do not doubt its accuracy, we have not verified and make no guarantee, warranty, or representation about it. It is your responsibility to independently confirm its accuracy and completeness and is subject to correction or can be withdrawn without notice.