

LMS

Commercial Real Estate

www.LMS-PMA.com

Lancaster County

Neighborhood Retail Center

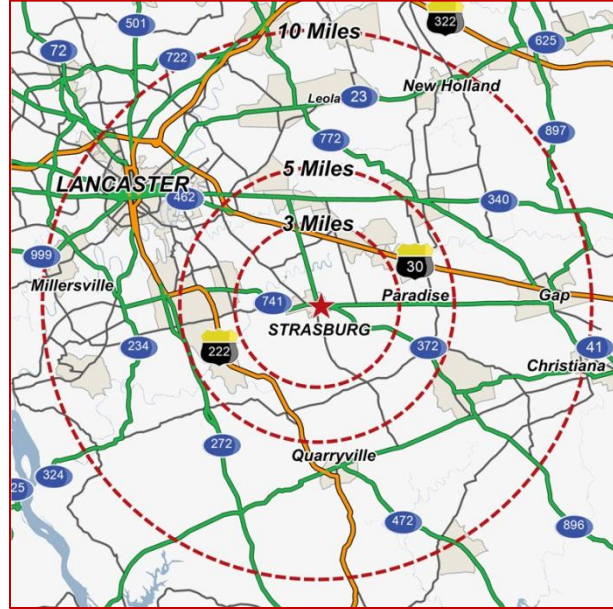
STRASBURG SQUARE

Total GLA: ± 20,624 SF

Strasburg, PA 17579

Strasburg Borough

Route 896 ~ Hartman Bridge Road



SPACE AVAILABLE:

- ± 640 SF
- ± 1,260 ~ 2,520 SF
- ± 1,956 SF
- ± 168 ~ 2,240 SF on 2nd Floor

2011 DEMOGRAPHICS:

	3 Mile	5 Mile	10 Mile
Population	10,208	33,375	219,546
Avg. HH Income	\$78,281	\$73,076	\$65,365
Daytime Population	4,385	16,205	119,105

Strasburg Square

Is a 20,624 square foot shopping center built in 1989.

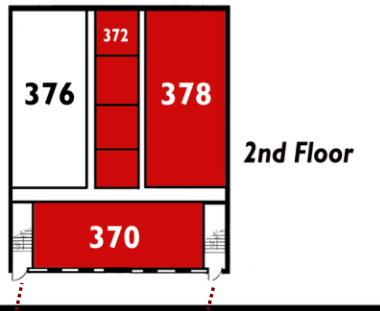
The center is conveniently located in the heart of the Amish tourist area of Lancaster County, which hosts **5 million** tourists annually.



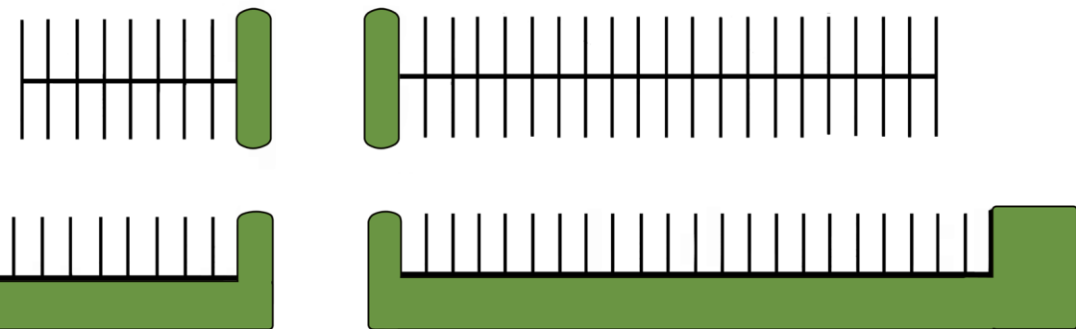
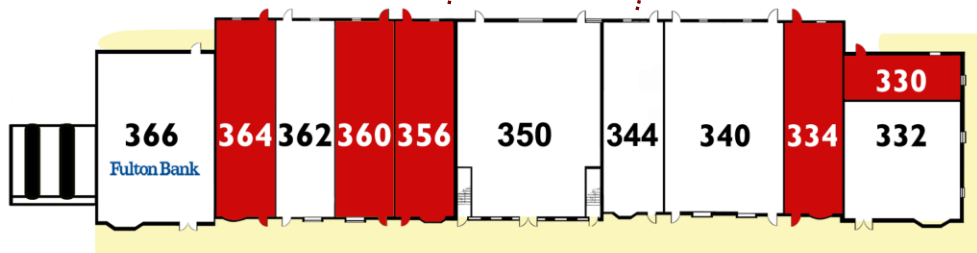
*See reverse side for **site plan**



Traffic Count Route 896: 14,000 vehicles per day



2nd Floor



Route 896 ~ Hartman Bridge Road

Subject to Change:

330	Available	640 SF
332	State Farm	1,560 SF
334	Available	1,956 SF
340	Premier Danse Academy	1,900 SF
344	Premier Danse Academy	1,260 SF
350	Strasburg Toys & Collectibles	3,000 SF
356	Available	1,260 SF
360	La Casetta Trattoria	1,260 SF
362	Fashion Cents Boutique	1,200 SF
364	Available	1,200 SF
366	Fulton Bank	2,200 SF
2nd Floor		
370	Available	818 SF
372	Available	168 SF
376	Schaeffer Pyrotechnic	948 SF
378	Available	1,254 SF

Strasburg Square - Strasburg, PA

FOR SALE or LEASE:
168 – 2,520 SF Available

LMS
Commercial Real Estate

For additional information, please contact:
Wilay Boensch
717.569.9373 ext. 616
wboensch@lms-pma.com

The information herein (including all faxes pertaining to the same) has been obtained from sources deemed reliable. While we do not doubt its accuracy, we have not verified and make no guarantee, warranty, or representation about it. It is your responsibility to independently confirm its accuracy and completeness and is subject to correction or can be withdrawn without notice.

www.LMS-PMA.com

120 North Pointe Blvd. • Suite 301 • Lancaster, PA 17601 • phone 717-569-9373 • fax 717-560-9909