

THE SHOPS AT PENNSVILLE

Total GLA: ± 183,270 SF

Pennsville, NJ 08070

(Pennsville Township)

Route 49 (247-269 North Broadway)

Anchored by: **ACME** **Peebles**
Great Fashions.



Managed by: **PMA** Property Management Alternatives, Inc.

2010 DEMOGRAPHICS:

	3 Mile	5 Mile	10 Mile
Population	16,789	57,136	338,007
Avg. HH Income	\$67,966	\$61,827	\$75,999
Daytime Population	8,252	32,253	219,583

SPACE AVAILABLE:

- ± 1,000 – 2,540 SF
- ± 1,800 SF
- ± 9,300 SF
- ± 5,000 SF
- ± 29,095 SF

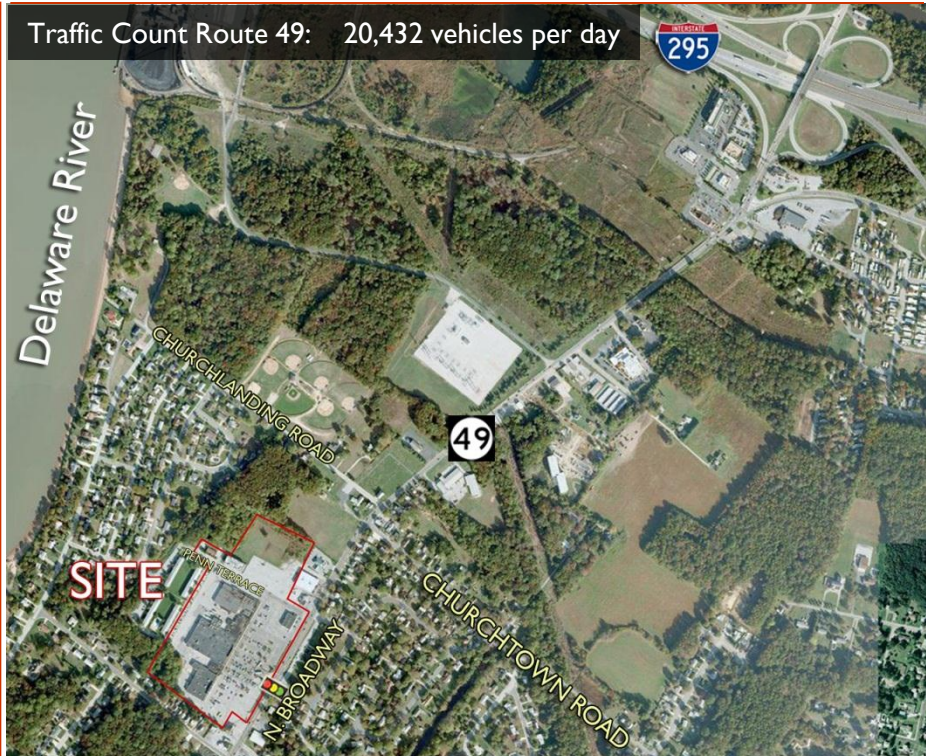
The Shops at Pennsville

a ± 183,270 square foot shopping center located in Pennsville, NJ.

The center is anchored by Peebles & Acme.

The center fronts Route 49, which has an average daily traffic count of over 20,000 vehicles.

Traffic Count Route 49: 20,432 vehicles per day



*See reverse side for **aerial**

The Shops at Pennsville ~ FOR LEASE

- ± 1,000 – 2,540 SF
- ± 1,800 SF
- ± 5,000 SF
- ± 9,300 SF
- ± 29,095 SF

Subject to Change:

1	Peebles	31,900 SF
2-3	Sleepy's	6,400 SF
4	ACME	70,850 SF
5	Fashion Bug	9,300 SF
6-7	China Inn Buffet	3,200 SF
8	99's Nails	1,600 SF
9	Available	1,800 SF
10-12	Payless Shoes	2,700 SF
13-15	Dollar Tree	8,125 SF
16	Penn Bowl	29,095 SF
17	Available	5,000 SF
17A	NovaCare	2,000 SF
18A	Available	1,540 SF
18B	Available	1,000 SF
19	Available	9,300 SF
20	Expansion Area	



For additional information, please contact:
 Michael Boden, SCSM
 717.569.9373 ext. 911
mboden@lms-pma.com



www.LMS-PMA.com

The information herein (including all faxes pertaining to the same) has been obtained from sources deemed reliable. While we do not doubt its accuracy, we have not verified and make no guarantee, warranty, or representation about it. It is your responsibility to independently confirm its accuracy and completeness and is subject to correction or can be withdrawn without notice.