

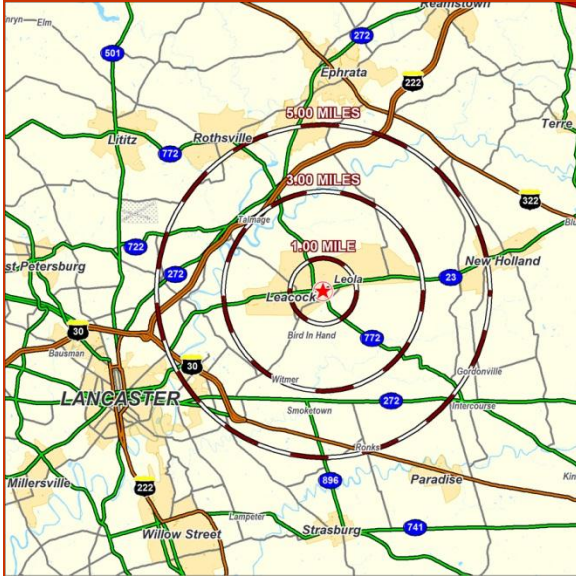
GIANT SHOPPING CENTER

Total GLA: ± 48,300 SF

Leola, PA 17540

(Leacock Twp)

10 Newport Road & New Holland Pike (Rt. 23)



SPACE AVAILABLE:

- 100% Leased

2010 DEMOGRAPHICS:

	1 Mile	3 Mile	5 Mile
Population	2,673	13,585	48,183
Avg. HH Income	\$76,237	\$85,961	\$85,275
Daytime Population	2,159	10,377	34,271

Giant Shopping Center

a neighborhood retail center located along the southwest corner of New Holland Pike (Rt. 23) and Newport Road.

Giant Foods is the largest grocery store in the area.

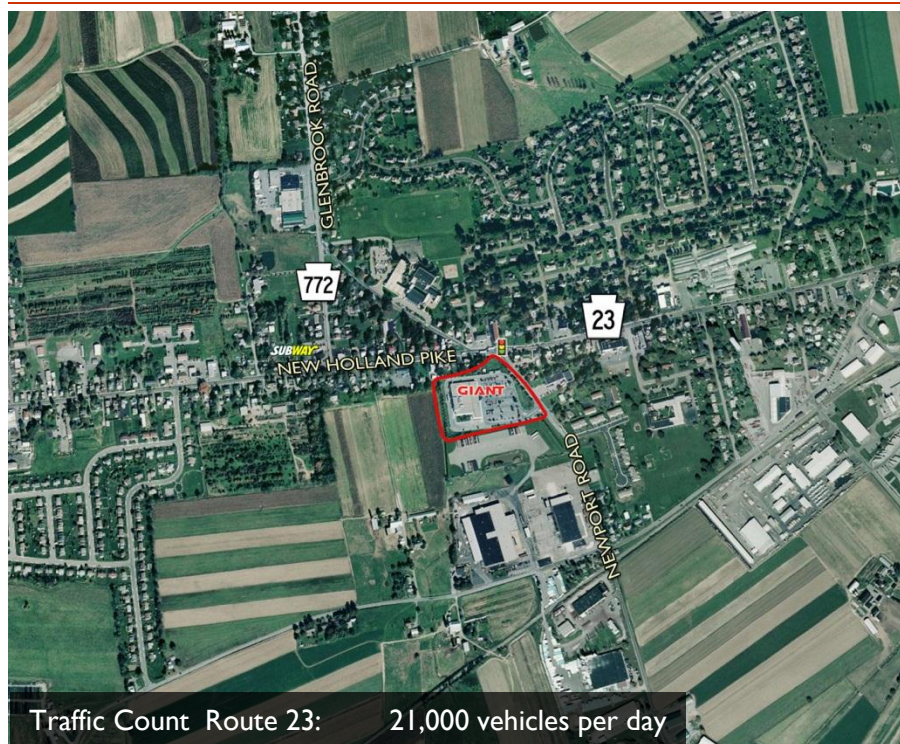
± 1,200 square foot inline is available.

This inline space is clean and open with an attractive lease rate.

Perfect location for a restaurant, hair salon, day spa, nail salon, dry cleaner, tanning salon or medical office.

Zoning: GC ~ General Commercial

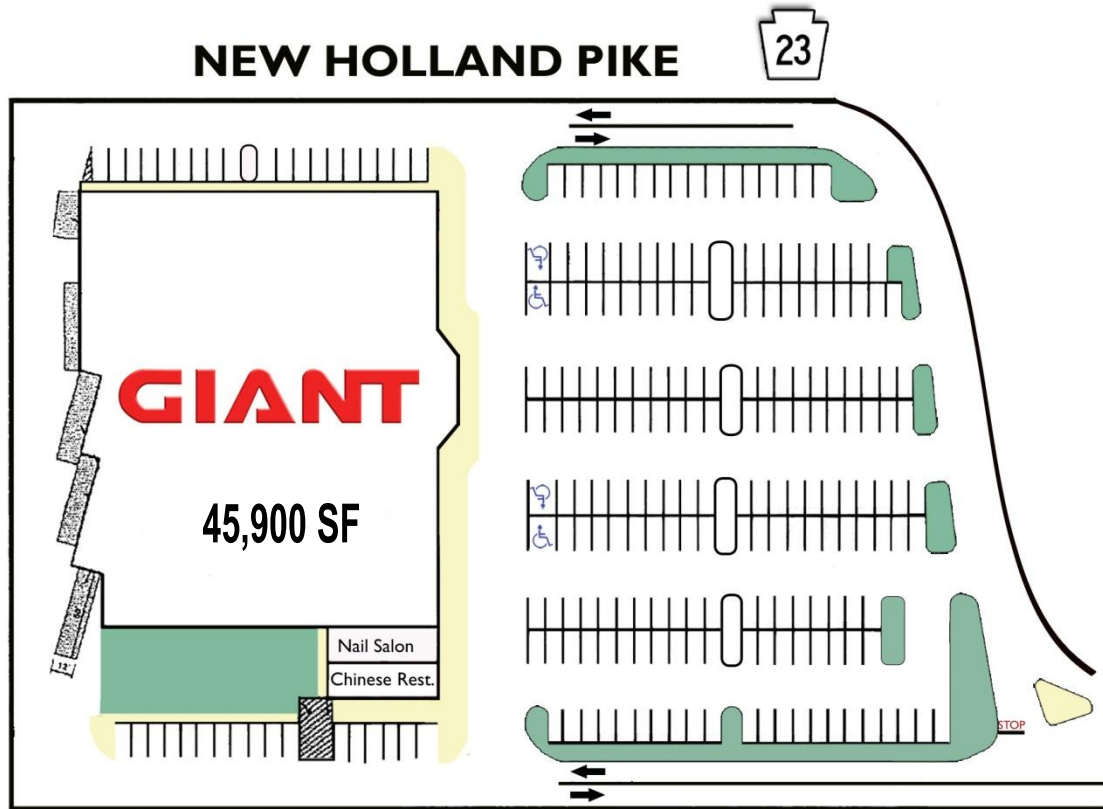
*See reverse side for **site plan**



Traffic Count Route 23: 21,000 vehicles per day

Giant Shopping Center ~ For Lease

100% Leased



NEWPORT ROAD



LMS
Leasing Management Services
Commercial Real Estate

For additional information, please contact:

Blake Gross

717.569.9373 ext. 493

bgross@lms-pma.com

The information herein (including all faxes pertaining to the same) has been obtained from sources deemed reliable. While we do not doubt its accuracy, we have not verified and make no guarantee, warranty, or representation about it. It is your responsibility to independently confirm its accuracy and completeness and is subject to correction or can be withdrawn without notice.

www.LMS-PMA.com

120 North Pointe Blvd. • Suite 301 • Lancaster, PA 17601 • phone 717-569-9373 • fax 717-560-9909