

LMS

Commercial Real Estate

www.LMS-PMA.com

Berks County

Freestanding Warehouse

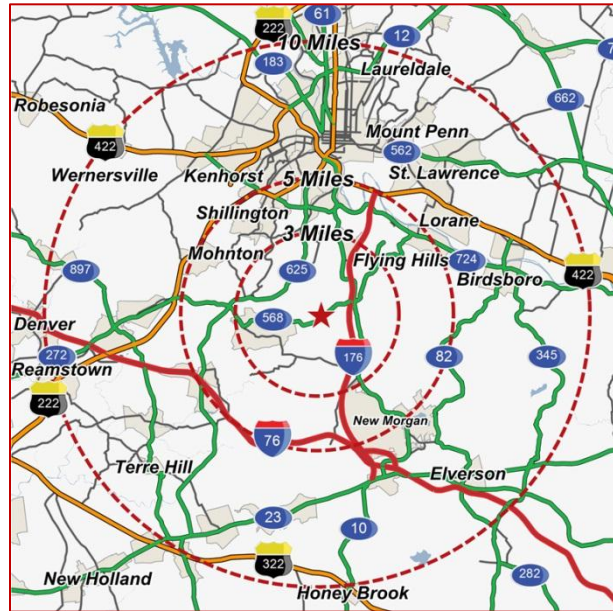
IRON MOUNTAIN

Total GLA: ± 91,319 SF

Mohnton, PA 19540

Brecknock Township

Route 568 & Kremp Rd.



In 1978, **Archive Warehouse** Built a 30,000 square foot storage facility.

Between 1988-2001 two (2) additions were added making the building a total of 91,319 square feet.

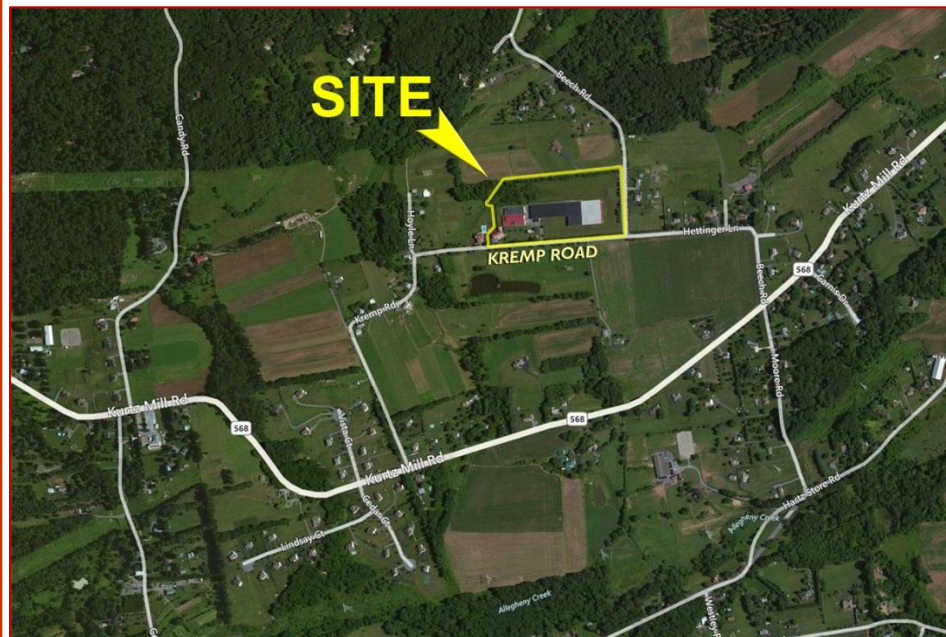
The property sits on +/- 13.5 Acres. The property resides off of Route 568 & Interstate 176 in Mohnton, PA.

The property is owned by Archive Warehouse, LLC and leased by Iron Mountain.

*See reverse side for **aerial**

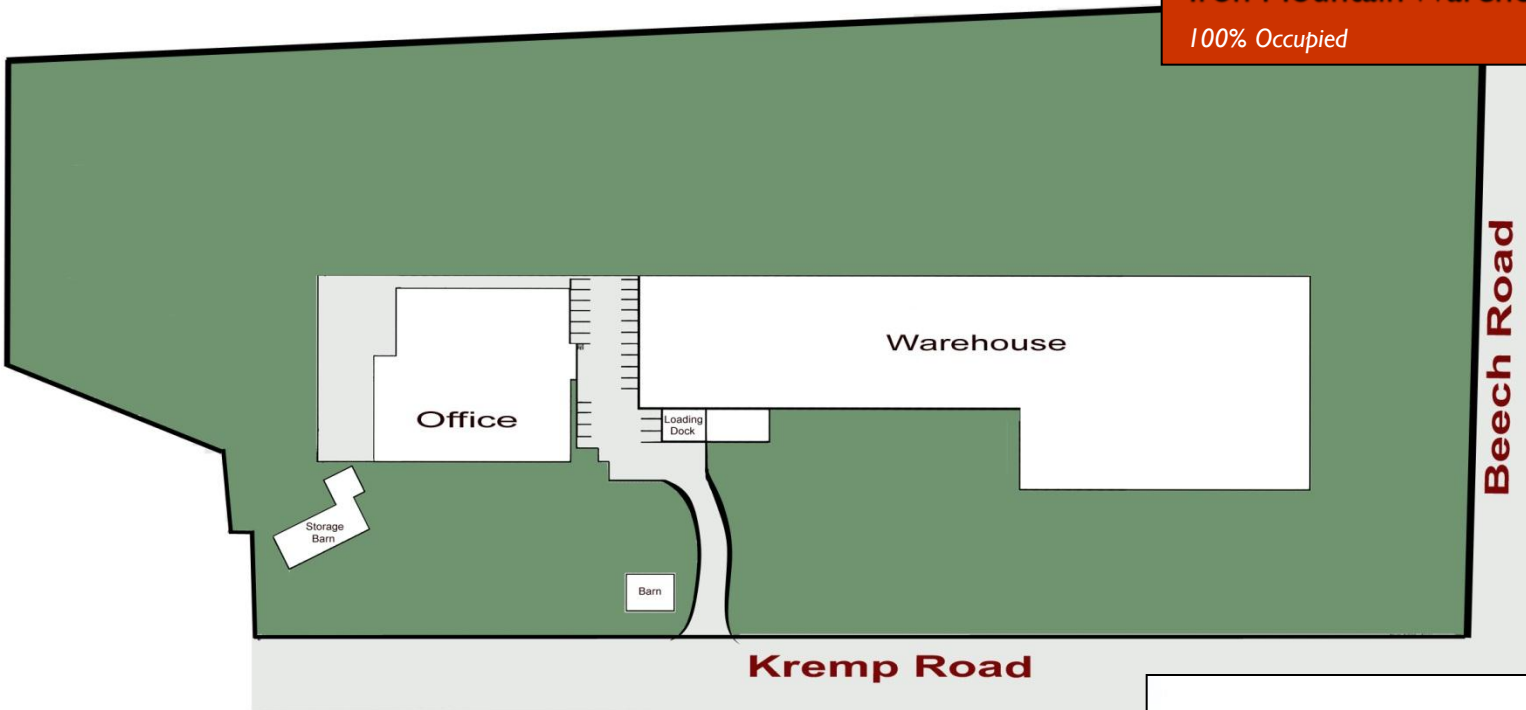
2011 DEMOGRAPHICS:

	<u>3 Mile</u>	<u>5 Mile</u>	<u>10 Mile</u>
Population	7,405	39,715	277,026
Avg. HH Income	\$101,352	\$80,380	\$66,509
Daytime Population	3,212	14,283	135,370



Iron Mountain Warehouse

100% Occupied



LMS

Commercial Real Estate

www.LMS-PMA.com

For additional information, please contact:

Joseph R. Deerin, CSM

717.569.9373

jrdeerin@lms-pma.com

The information herein (including all faxes pertaining to the same) has been obtained from sources deemed reliable. While we do not doubt its accuracy, we have not verified and make no guarantee, warranty, or representation about it. It is your responsibility to independently confirm its accuracy and completeness and is subject to correction or can be withdrawn without notice.