

LMS

Leasing Management Sales

Commercial Real Estate

www.LMS-PMA.com

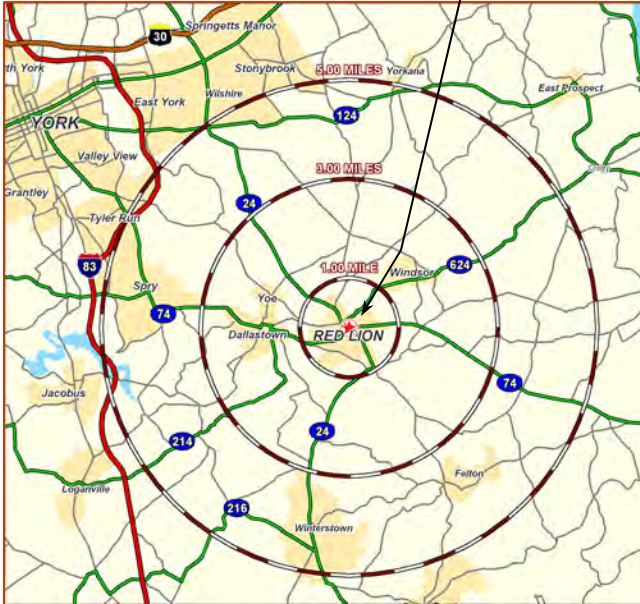
15 SOUTH MAIN STREET

Total GLA: +/- 9,156 SF

Red Lion, PA 17356

(Red Lion Boro)

15 South Main Street



SPACE AVAILABLE:

- +/- 2,800 SF on First Floor

2009 DEMOGRAPHICS:

	1 Mile	3 Mile	5 Mile
Population	7,631	28,920	57,141
Avg. HH Income	\$52,502	\$62,112	\$67,124
Daytime Population	5,831	22,664	45,314

15 South Main Street

Was built in 1929, this splendid building has just been completely renovated and restored, preserving all the charm and character of that era.

From the abundance of natural light emanating from the new large windows, to the beautiful hardwood floors, this building offers style and a premiere location in the heart of Red Lion for today's discerning business.

This site offers on-site parking, new HVAC system, new electrical and security system.

Each space has store front visibility and flexibility. Flexible zoning to allow for many uses.

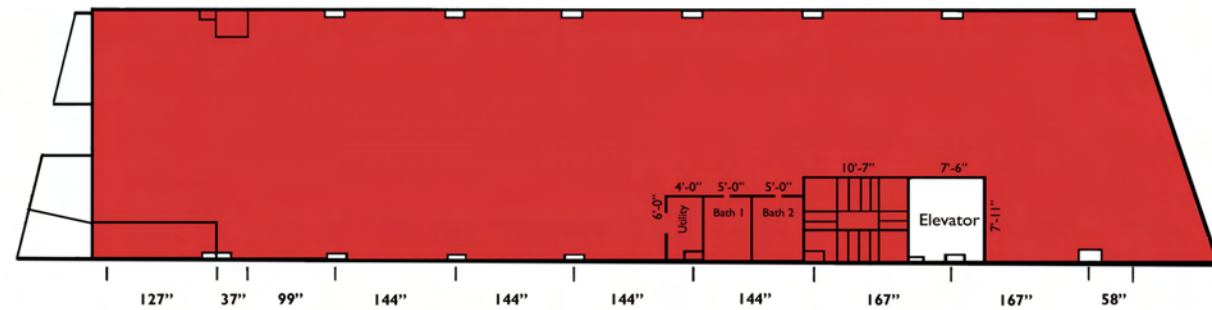
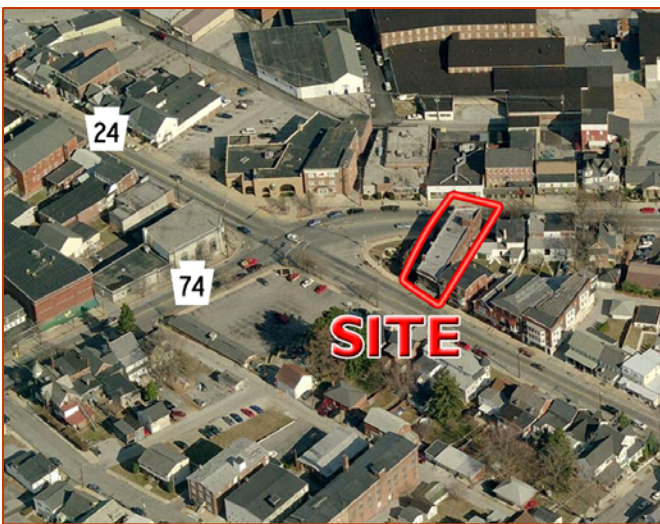
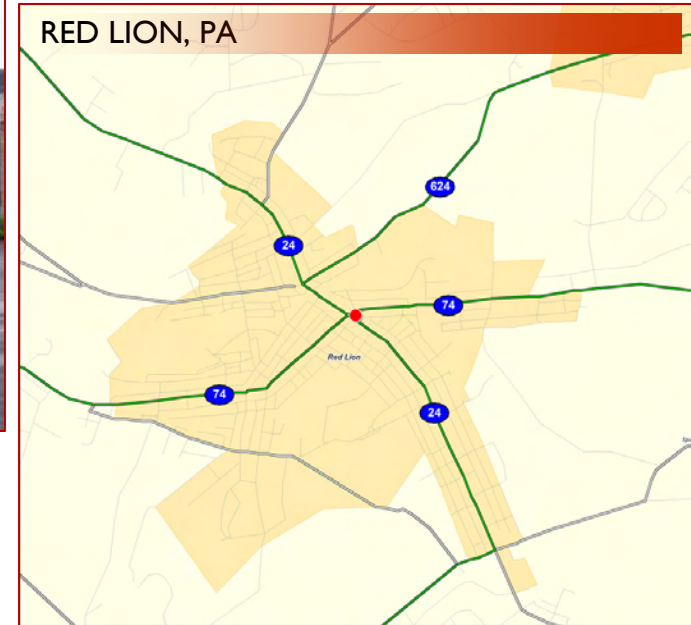
*See reverse side for floor plans



Traffic Count Route 74: 12,000 vehicles per day
 Route 24: 17,000 vehicles per day



15 South Main Street ~ FOR LEASE
 +/- 2,800 SF on First Floor



FIRST FLOOR

LMS
 Leasing Management Services
 Commercial Real Estate

www.LMS-PMA.com

For additional information please contact:

Chad Ward
 717.569.9373 ext. 958
cward@lms-pma.com

Travis Riley
 717.569.9373 ext. 617
triley@lms-pma.com