

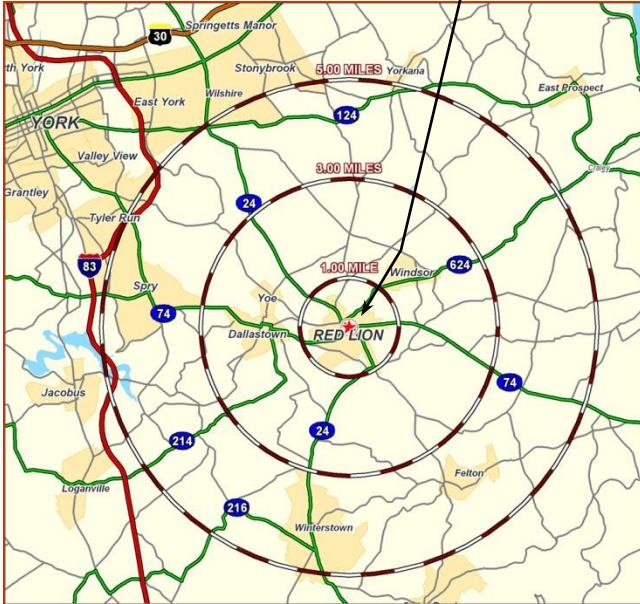
# 15 SOUTH MAIN STREET

Total GLA: +/- 9,156 SF

## Red Lion, PA 17356

(Red Lion Boro)

### 15 South Main Street



### SPACE AVAILABLE:

- +/- 2,269 SF on First Floor

### 2010 DEMOGRAPHICS:

	1 Mile	3 Mile	5 Mile
Population	7,856	29,087	57,387
Avg. HH Income	\$57,109	\$66,496	\$71,707
Daytime Population	3,553	7,966	15,012

### 15 South Main Street

Was built in 1929, this splendid building has just been completely renovated and restored, preserving all the charm and character of that era.

From the abundance of natural light emanating from the new large windows, to the beautiful hardwood floors, this building offers style and a premiere location in the heart of Red Lion for today's discerning business.

This site offers on-site parking, new HVAC system, new electrical and security system.

Each space has store front visibility and flexibility. Flexible zoning to allow for many uses.

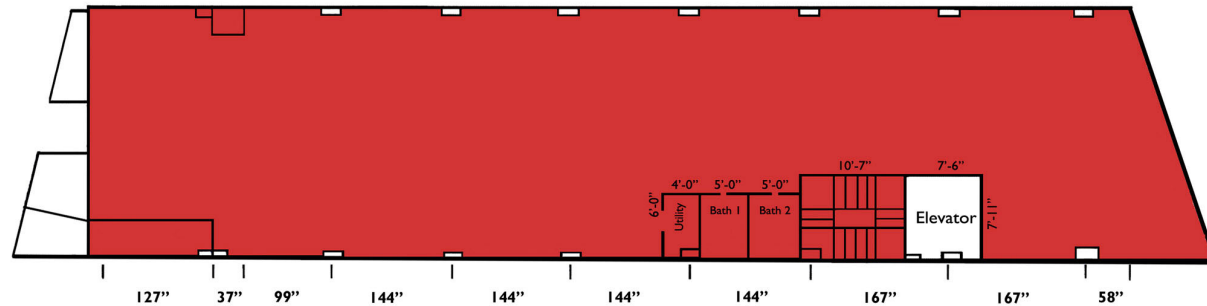
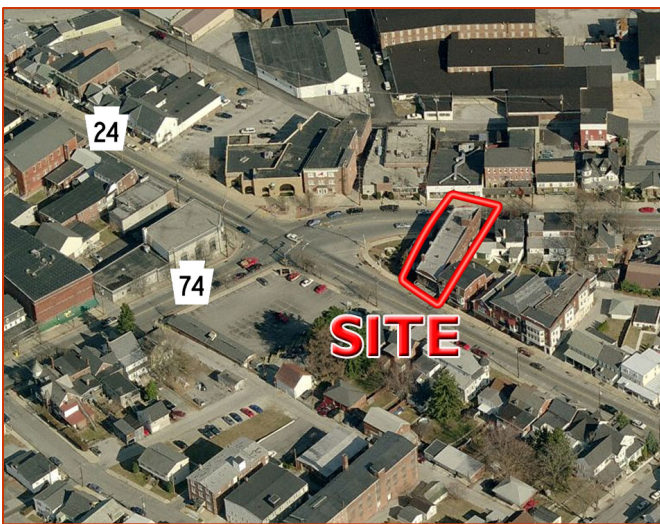
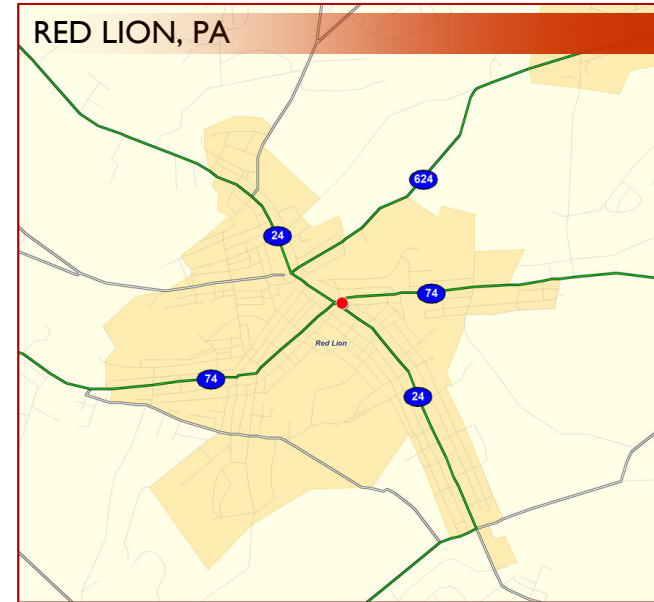
\*See reverse side for **floor plans**



Traffic Count Route 74: 12,000 vehicles per day  
Route 24: 17,000 vehicles per day

15 South Main Street ~ FOR LEASE

+/- 2,269 SF on First Floor



FIRST FLOOR



For additional information, please contact:

Chad Ward  
717.569.9373 ext. 958

Travis Riley  
717.569.9373 ext. 617

[cward@lms-pma.com](mailto:cward@lms-pma.com)

[triley@lms-pma.com](mailto:triley@lms-pma.com)

The information herein (including all faxes pertaining to the same) has been obtained from sources deemed reliable. While we do not doubt its accuracy, we have not verified and make no guarantee, warranty, or representation about it. It is your responsibility to independently confirm its accuracy and completeness and is subject to correction or can be withdrawn without notice.

[www.LMS-PMA.com](http://www.LMS-PMA.com)

120 North Pointe Blvd. • Suite 301 • Lancaster, PA 17601 • phone 717-569-9373 • fax 717-560-9909