

Commercial Real Estate

20th Anniversary Celebration

Lebanon, PA 17046

(North Lebanon Township)

101 Old Ebenezer Road

101 OLD EBENEZER ROAD

FOR SALE ± 13 Acres

PRICE REDUCTION \$850,000



2010 DEMOGRAPHICS:

| | <u>1 Mile</u> | <u>3 Mile</u> | <u>5 Mile</u> |
|---------------------|---------------|---------------|---------------|
| Population: | 3,195 | 42,711 | 65,260 |
| Avg. HH Income: | \$55,943 | \$53,268 | \$56,481 |
| Daytime Population: | 1,102 | 16,070 | 25,739 |

SPACE AVAILABLE:

- ± 13 Acres

Traffic Count Ebenezer Rd (Route 72): 11,000 vehicles per day

101 Old Ebenezer Road
has ± 13 acres available for sale.

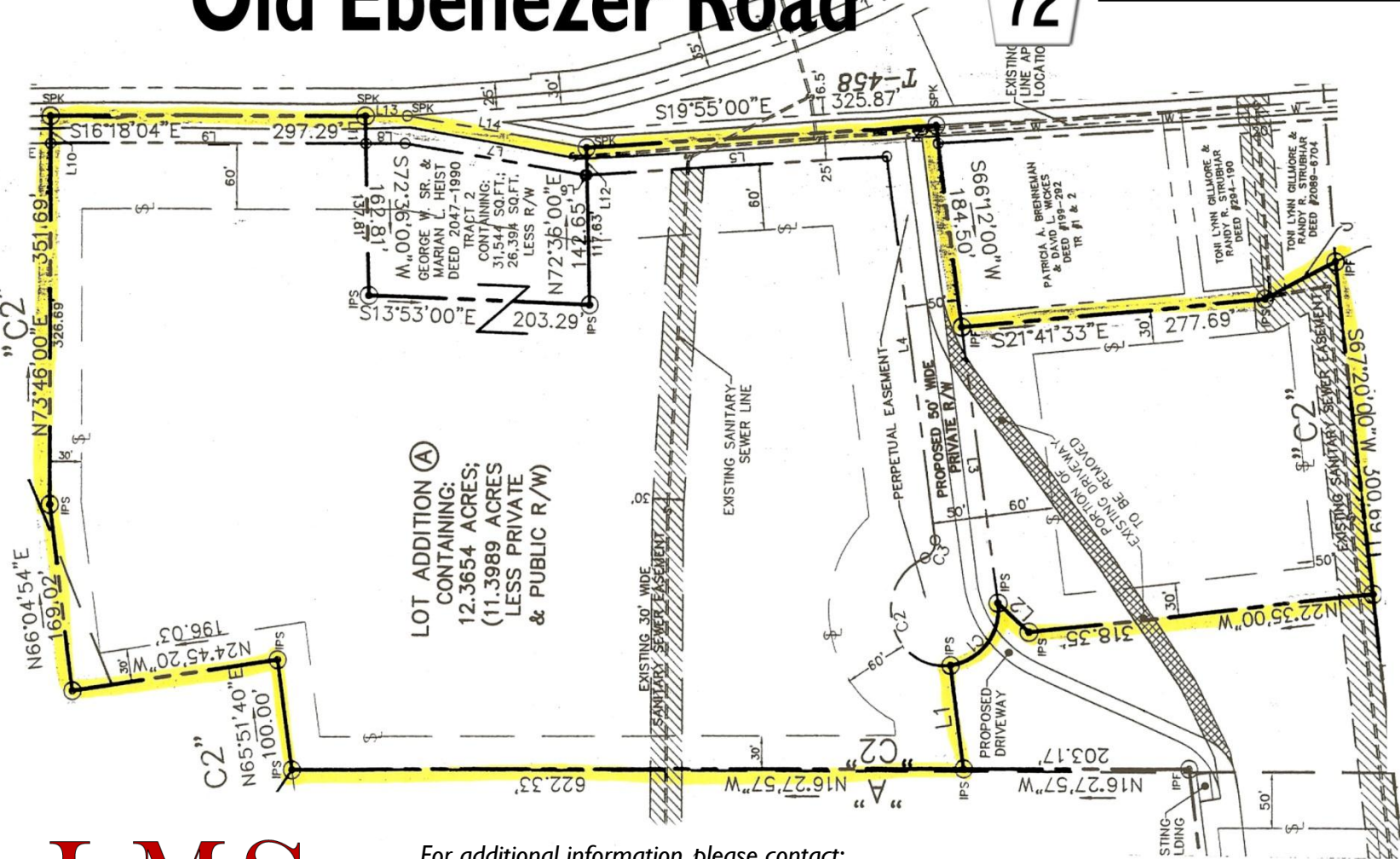
Zoning:
C~2 General Commercial

*See reverse side for **aerial**



101 Old Ebenezer Road ~
 For Sale
 ±13 Acres Zoned: C2 ~ Commercial

Old Ebenezer Road



LOT ADDITION (A)
 CONTAINING:
 12.3654 ACRES;
 (11.3989 ACRES
 LESS PRIVATE
 & PUBLIC R/W)



For additional information, please contact:
 Ted Tummel
 717.222.9625
thummel@lms-pma.com

The information herein (including all faxes pertaining to the same) has been obtained from sources deemed reliable. While we do not doubt its accuracy, we have not verified and make no guarantee, warranty, or representation about it. It is your responsibility to independently confirm its accuracy and completeness and is subject to correction or can be withdrawn without notice.